

# **TABLE SHARK™**

## **Table Shark – User Manual**

*From Poker Pro Labs™*



**POKER PRO LABS**  
THE MOST ADVANCED POKER TOOLS

# Contents

Table Shark – User Manual .....	1
Contents .....	2
1. Introduction to Table Shark .....	3
2. Installing Table Shark.....	4
2.1 Checking For Updates .....	4
2.2 Requesting a Trial License.....	4
3. Using Table Shark .....	5
3.1 Games - Table Information .....	6
3.2 Filter Options.....	6
3.2 Game Players.....	7
4. Table Shark Settings.....	8
4.1 Settings Menu.....	8
4.2 Preferences .....	9
4.2.1 Poker Tracker Integration.....	10
4.2.2 Filter Preferences .....	10
4.2.3 Table Types .....	11

## 1. Introduction to Table Shark

Table Shark allows you to identify the best tables to play on, without having to enter a single poker room.

By accessing live data from multiple internet poker rooms, Table Shark shows you which tables are loose, tight, short or long-handed and much more:

- Poker room & table name
- Limit
- Poker type
- Stake
- Number of players
- Average VP\$IP (Voluntary Put In Pot \$)
- Average PFR (Pre-Flop Raise %)
- Average Ag (Aggression Factor)
- Average Pot
- Pot BB
- Players/Flop
- Hands/Hour
- Table Type - loose/tight rating

You can search and sort this data anyway you choose, using the factors above as a filter to manage the information displayed by Table Shark.

For example, you could search for all the Fixed Limit Texas Hold'em tables currently active at Poker Stars, Poker Room and Absolute Poker.

You could then sort the results (*just click on the column heading*) by number of players and choose a couple of short-handed tables to join.

In addition to this great functionality, Table Shark also integrates with Poker Tracker, allowing you to download hand histories and then incorporate that information into your Table Shark display, personalizing the data Table Shark gives you.

## 2. Installing Table Shark

Installing Table Shark is quick and simple. Follow the steps below to get started.

1. Download the Table Shark program file from Poker Pro Labs' website:  
<http://www.pokerprolabs.com/tableshark/index.html>
2. Double-click on the TableShark.exe file to get started:



3. The Table Shark installer will ask you to provide your name and email address. **Make sure you provide a valid email address as this will be required for you to receive your Table Shark license key.**

Name:	My Name
Email:	me@email.com
Confirm Email:	me@email.com

Once the installation is finished, click **Finish** to exit the installer and load up Table Shark.

### 2.1 Checking For Updates

When you run Table Shark for the first time, it will connect to the internet and check for any updates:



Click **Yes** to proceed. By default, Table Shark will check for updates each time it starts up.

### 2.2 Requesting a Trial License

If you are trying Table Shark for the first time and have not yet purchased a license, you can request a **Free** trial license the first time you login. Trial licenses last for 3 days and allow you to access Table Shark's full functionality.

To request a trial license, click on the **Obtain Trial License** button in the login dialog box.

**You will be asked to confirm your email address. Make sure it is correct, as your license will be sent to this address:**



*(If you already have a license, just login with the User ID and password you have already received via email.)*

### 3. Using Table Shark

The main Table Shark window is divided into three sections:

- **Games** - Detailed information about every game currently being played in the poker rooms supported by Table Shark. Click on any column heading to sort the games by that criteria
- **Filter** - Use the check boxes to filter the information displayed by Table Shark
- **Game Players** - Information about the players at the currently selected table. This information is taken from the Poker Tracker tool, with which Table Shark can be used. Information is only available for those players that you have already played against.

### 3.1 Games - Table Information

Site	Table	Limit	Poker Type	Stake	# of	Avg VPSI	Avg PFR	Avg Agg	Avg Pot	Pot BB	Plrs/Flop	H/hr	Name
🎰	Lawson's III (fast, 1-on-1)	NL	Hold'em	\$3.00/\$6.00	2	N/A	N/A	0.00	\$70.00	11xBB	80%	133	Loose
🎰	Cheruskia II (6 max)	NL	Hold'em	\$3.00/\$6.00	3	N/A	N/A	0.00	\$48.00	8xBB	50%	60	Neutral
🎰	Nyasa III (50BB min, 6 max)	NL	Hold'em	\$3.00/\$6.00	2	N/A	N/A	0.00	\$69.00	11xBB	50%	150	Neutral
🎰	Cesaco II (6 max)	NL	Hold'em	\$3.00/\$6.00	6	N/A	N/A	0.00	\$145.00	24xBB	36%	81	Neutral
🎰	Tiftis III (50BB min)	NL	Hold'em	\$3.00/\$6.00	3	N/A	N/A	0.00	\$79.00	13xBB	28%	150	Super Tight
🎰	Dirkies II (fast)	NL	Hold'em	\$3.00/\$6.00	9	N/A	N/A	0.00	\$89.00	14xBB	26%	70	Neutral
🎰	Isa IV (6 max)	NL	Hold'em	\$3.00/\$6.00	6	N/A	N/A	0.00	\$54.00	9xBB	26%	92	Tight
🎰	Penelope (fast, 1-on-1)	NL	Hold'em	\$3.00/\$6.00	2	N/A	N/A	0.00	\$11.00	1xBB	26%	150	Super Tight
🎰	Phoenix (fast, 1-on-1)	NL	Hold'em	\$3.00/\$6.00	2	N/A	N/A	0.00	\$63.00	10xBB	25%	150	Super Tight
🎰	Samithell III (50BB min)	NL	Hold'em	\$3.00/\$6.00	9	N/A	N/A	0.00	\$98.00	16xBB	23%	62	Neutral
🎰	Makhaon V (50BB min, 6 max)	NL	Hold'em	\$3.00/\$6.00	6	N/A	N/A	0.00	\$121.00	20xBB	21%	72	Tight
🎰	Marqo III (fast, 6 max)	NL	Hold'em	\$3.00/\$6.00	6	N/A	N/A	0.00	\$50.00	8xBB	21%	150	Tight
🎰	Hesator II (fast, 6 max)	NL	Hold'em	\$3.00/\$6.00	6	N/A	N/A	0.00	\$49.00	8xBB	21%	90	Tight
🎰	Radeqast III (50BB min, 6 max)	NL	Hold'em	\$3.00/\$6.00	6	N/A	N/A	0.00	\$77.00	12xBB	21%	109	Tight

(Click on **Poker Tracker Games** to see an analysis of the games stored in your **Poker Tracker** database)

The Games table allows you to view detailed information about all of the games currently being played in Table Shark's supported poker rooms.

To sort the tables, simply click on the column heading you would like to sort by. **E.g. Click on Stake to sort games by their maximum and minimum stakes.**

In the left-hand column, the logo of each table's poker site is displayed, allowing you to recognize the logos for the poker sites you play in.

**To join any game, simply click on the Table name.**

You will then be prompted to:

- Login to the relevant poker client
- Install the relevant poker client

If you don't have an account or installation for the poker client you need, you will automatically be taken to that poker room's website.

### 3.2 Filter Options

The **Filter** section is located down the left-hand side of the screen, and is made up of several subdivisions.

You can create your own custom filters by selecting the filter criteria you want to use and then clicking the **Search for Tables** button at the top and bottom of this section:

<input type="button" value="Search for Tables"/>	Click the <b>Search for Tables</b> button to update your table selection based on your filter choices.
--	--

<p><b>Player Type</b> ^</p> <p><a href="#">Configure</a></p> <p><b>Note:</b> Player Types were not updated. Please check the <a href="#">Database Settings</a> to</p>	<p>The <b>Player Type</b> functionality is only activated when you have a correctly configured connection to Poker Tracker.</p> <p>If you see this message, click on Database Settings to complete configuration.</p>
<p><b>Poker Site</b> ^</p> <p><input checked="" type="checkbox"/> Poker Stars</p> <p><input checked="" type="checkbox"/> Full Tilt Poker</p> <p><input checked="" type="checkbox"/> Poker Room</p> <p><input checked="" type="checkbox"/> Ultimate Bet</p> <p><input checked="" type="checkbox"/> Partu &amp; Affiliat</p>	<p>Table Shark supports a large number of poker rooms. These are all listed in the <b>Poker Site</b> section of the filter.</p> <p>Select the poker sites whose tables you want to see, or deselect a site you do not want included in the <b>Games</b> list.</p>
<p><b>Game Limit</b> ^</p> <p><input checked="" type="checkbox"/> Fixed Limit</p> <p><input checked="" type="checkbox"/> Pot Limit</p> <p><input checked="" type="checkbox"/> No Limit</p>	<p>The <b>Game Limit</b> section allows you to specify which type of limit you are interested in.</p> <p>Only games matching selected limits will be displayed by Table Shark.</p>
<p><b>Game Type</b> ^</p> <p><input checked="" type="checkbox"/> Hold'em</p> <p><input checked="" type="checkbox"/> Omaha</p> <p><input checked="" type="checkbox"/> Omaha Hi/Lo</p> <p><input checked="" type="checkbox"/> 7 Card Stud</p> <p><input checked="" type="checkbox"/> 7 Card Stud Hi/Lo</p>	<p>Table Shark supports every variety of poker offered online.</p> <p>The <b>Game Type</b> section of the filter allows you to choose your preferred type of poker game. Table Shark will only show games that match your selected types.</p>
<p><b>Stakes</b> ^</p> <p><input checked="" type="checkbox"/> High (\$5.01 - \$10...</p> <p><input checked="" type="checkbox"/> Medium (\$0.51 - ...</p> <p><input checked="" type="checkbox"/> Low (\$0 - \$0.5)</p> <p><a href="#">Configure</a></p>	<p>The <b>Stakes</b> section of the filter allows you to specify the stakes for which you would like to play.</p> <p>Once you have chosen your preferred stakes, Table Shark will only display those tables that match your selection.</p>
<p><b>Player Number</b> ^</p> <p><input checked="" type="checkbox"/> From 1 to 3</p> <p><input checked="" type="checkbox"/> From 4 to 6</p> <p><input checked="" type="checkbox"/> From 7 to 10</p> <p><a href="#">Configure</a></p>	<p>The <b>Player Number</b> section of the filter allows you to specify how many players you want to play against.</p> <p>Table Shark will then only show you tables with that number of players.</p>

### 3.2 Game Players

The **Game Players** table allows you to see detailed information about the players at a selected table:

Game Players						
Player Icon	Player Name (alias)	Won	Hands	VPIP	PFR%	Agg
	PawHansen21	\$0.00	0	N/A	N/A	0.00
	ALEXCLAIM	\$0.00	0	N/A	N/A	0.00
	gmoneyraker	\$0.00	0	N/A	N/A	0.00
	kdog50cal	\$0.00	0	N/A	N/A	0.00
	Mr Cardace	\$0.00	0	N/A	N/A	0.00
	muya	\$0.00	0	N/A	N/A	0.00

Notes

Game Players All Players

(Choose the **All Players** option to see a list of all players currently at the tables.)

The information in the **Game Players** table will only be populated if you are also using Poker Tracker.


**Data will only be available for players you have played against while using Poker Tracker.** Otherwise, only the players' screen names will be displayed (as shown above).

## 4. Table Shark Settings

Table Shark is ready to use upon installation, but if you would like to customize it to suit your poker style, you can.

### 4.1 Settings Menu

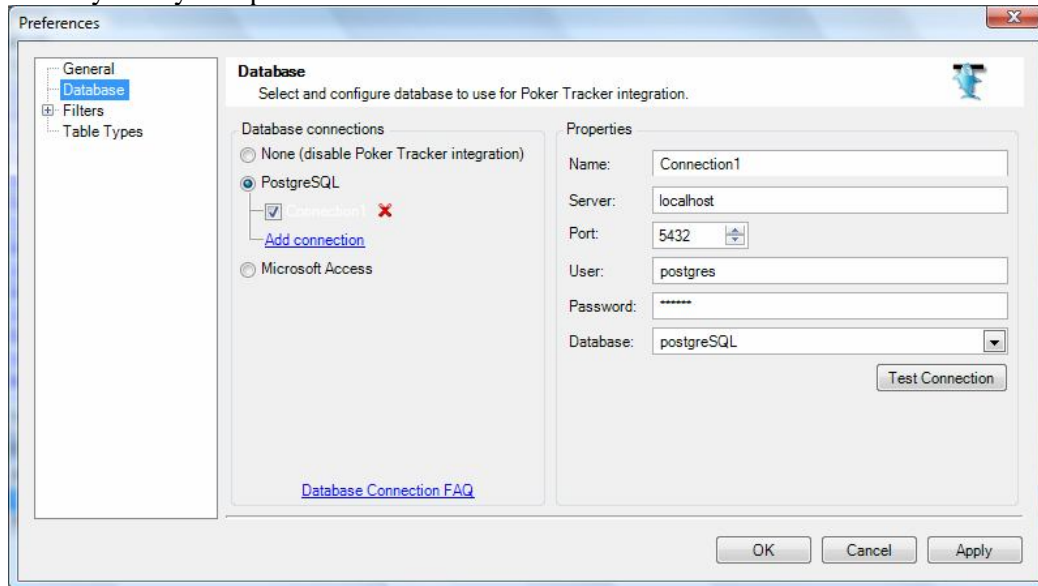
The first options you will see are on the **Settings** menu:

	<p>Click <b>Skip Update</b> to prevent Table Shark automatically checking for updates when it starts up.</p> <p>Click <b>Auto Startup</b> to have Table Shark startup automatically when you log in to your PC.</p> <p>Click <b>Preferences</b> to access Table Shark's customization options.</p>
---	--

## 4.2 Preferences

### 4.2.1 Poker Tracker Integration

The preferences dialog box allows you to customize the Table Shark filter parameters to suit your style of poker and connect to the Poker Tracker database:



To connect to the Poker Tracker database (PostgreSQL only):

1. Click on Database in the left-hand pane
2. Click PostgreSQL and click Add Connection
3. Leave Name, Server and Port unchanged
4. Enter User and Password as follows:  
User: postgres  
Password: dbpass
5. Select the database from the drop-down list
6. Click Test Connection, then click Ok when the confirmation box comes up
7. Click Ok to close the box.

To connect to the Poker Tracker database (Access only):

1. Click on Database in the left-hand pane
2. Click Access and click Add Connection
3. Leave Name
4. Click on Browse and Navigate to the Poker Tracker database (usually in the Poker Tracker folder)
5. Leave User and Password blank
6. Click Test Connection, and then click Ok when the confirmation box comes up
7. Click Ok to close the box.

You are now connected to the Poker Tracker Database. Click on the Poker Tracker Games to see players from your Poker Tracker database currently on-line.

Game	Player Name (alias)	Won	Chips	Hands	VPIP	PFR%	Agg
fightingmuns		\$0.00	\$979.00	0	N/A	N/A	0.00
MAPARO		\$0.00	\$228.00	0	N/A	N/A	0.00

## 4.2.2 Filter Preferences

Table Shark allows you to customize several filter parameters so the tables you see are more closely matched to your playing style:

	<p>To edit the icon used for a <b>Player Type</b>, click on it then click on the  button and choose a new icon from the dialog box.</p> <p>To edit a name, just click on the existing text. You will then be able to edit it.</p>
	<p>To edit a stake value, move your mouse over the number and then use the arrow buttons that appear to adjust the stake.</p>
	<p>To change a player number, move your mouse over it and then use the arrow buttons (shown) to adjust the number.</p>

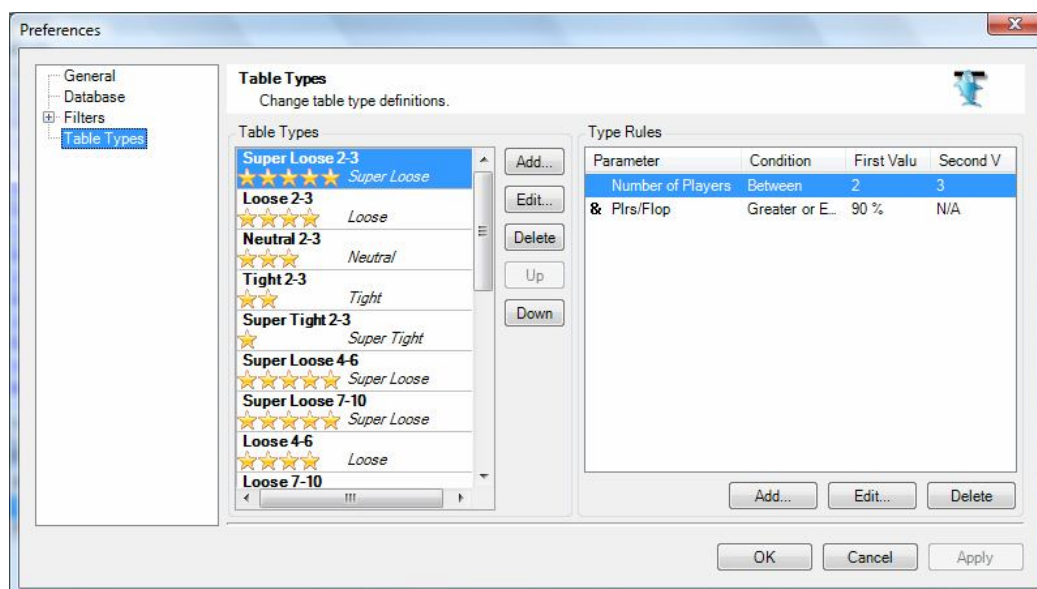
These preferences can also be accessed by dragging your mouse over the Table Shark icon in your taskbar menu and hitting the right mouse button. This action will allow you to open Table Shark, begin the import process, check the status of your database, or exit the program easily.

### 4.2.3 Table Types

Table Shark automatically categorizes tables as *Super Loose*, *Loose*, *Neutral*, *Tight* and *Super Tight*. These descriptions are combined with player numbers to provide a **table type** rating for each table - for example:

**Loose 7-10** - *this table is loose and has 7-10 players*

The **Table Type** definitions can all be customized using the **Table Types** preferences:

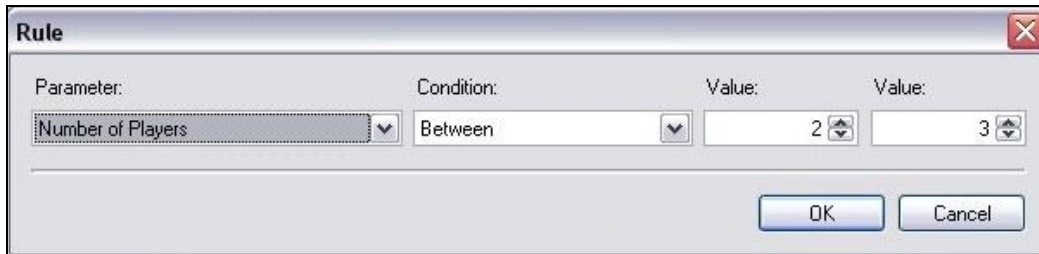


To change a **table type** name, select the **table type** then click the **Edit** button below the left pane.

Enter your changes into the dialog box and click **OK** to save.

To edit a **table type** definition:

1. Select the **table type** you wish to edit in the left pane.
2. Select the type rule you wish to customize in the *right* pane.
3. Click the **Edit** button below the *right* pane. You will be presented with a dialog box like this:



Make your changes, and then click **OK** to save and return to the main preferences window.